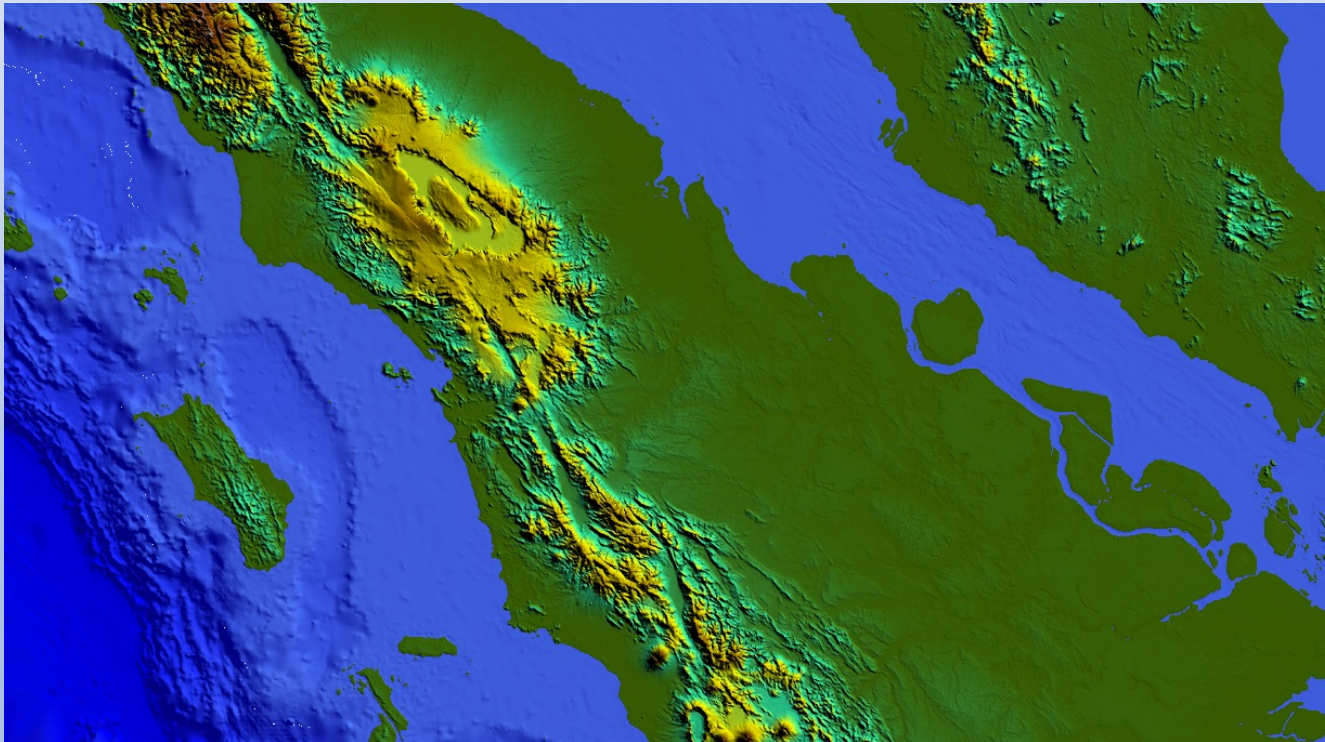


GSEA INTELLIGENCE®

INDONESIA

SUMATRA (CENTRAL BASINS) E&P DATA



➤ **CENTRAL SUMATRA BASIN**

➤ **OMBILIN BASIN**

- **Contact Mark Harris at GSEA Intelligence Pte Ltd:**
- **mark63moha@gmail.com**
- **+65 96207698**
- **+66 637861872**
- **www.gsea-intelligence.com**

INDONESIA – SUMATRA (CENTRAL BASINS) E&P DATA

- PSC documents (8 contract areas)
- Work Program & Budget reports (23 PSCs, 234 reports with multiple additional documents, P&L summaries, reserves summaries etc)
- Prospects & Leads inventories (14 PSCs, 52 reports)
- PSC & basin level technical reports (16 reports)
- PODs & field reports (93 reports)
- Annual reserves reports (9 PSCs, 27 reports)
- Monthly production reports (7 PSCs, 417 reports)
- 2D seismic (SEG Y) in preparation
- 633 wells (logs, reports, LAS)

- *Catalog available*
- *Data available by basin, defined area, block or individual item level*
- *Collated public domain data also available*

- **DATABASE SERVICES** – Contract area and commitment/activity summaries, compiled seismic, wells, fields, reserves, production & infrastructure available to order