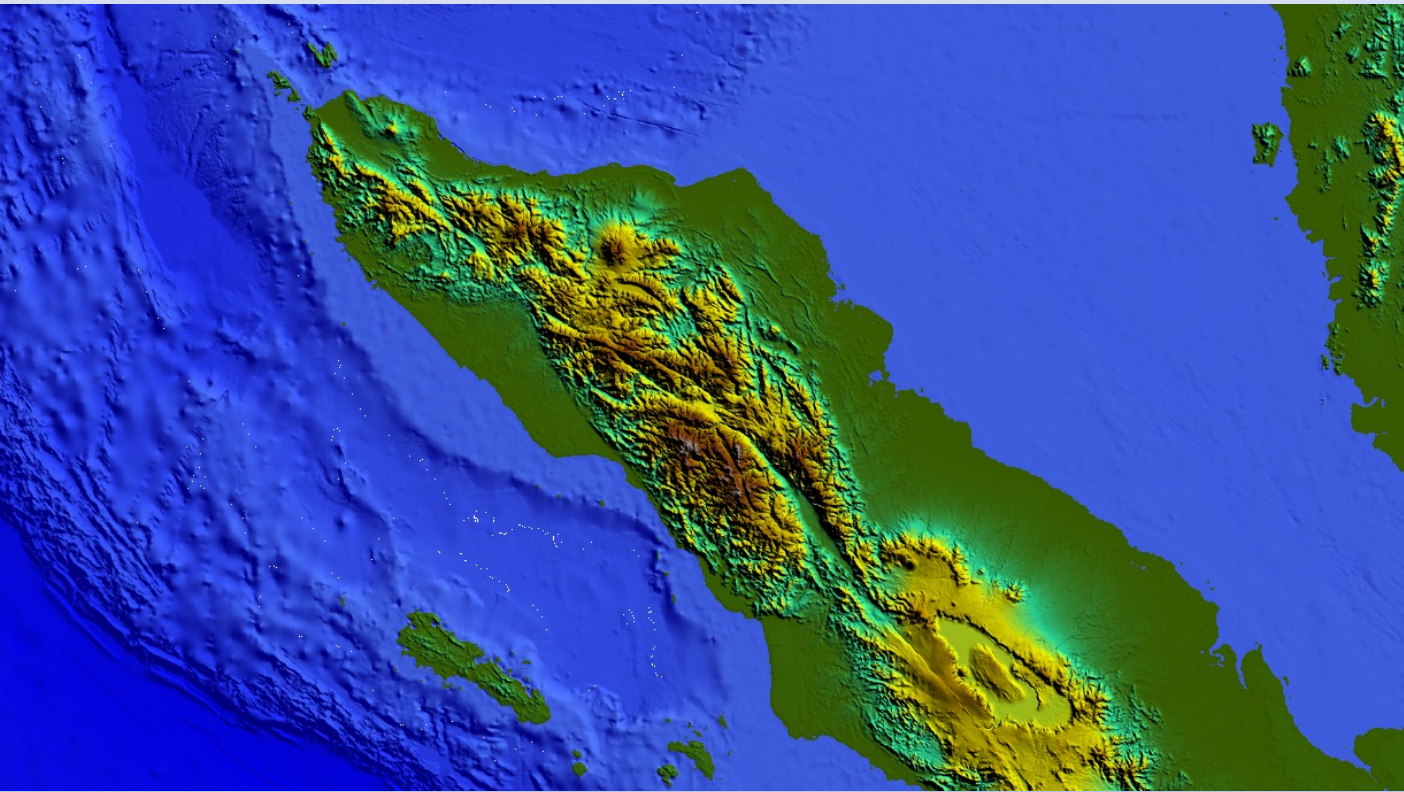


# **GSEA INTELLIGENCE®**

## **INDONESIA SUMATRA (N&W BASINS) E&P DATA**



- NORTH SUMATRA BASIN
- SIBOLGA BASIN
- NIAS BASIN

- Contact Mark Harris at GSEA Intelligence Pte Ltd:
- mark63moha@gmail.com
- +65 96207698
- +66 637861872
- [www.gsea-intelligence.com](http://www.gsea-intelligence.com)

# INDONESIA – SUMATRA (N&W BASINS) E&P DATA

- PSC, TAC & KSO documents (14 contract areas)
- Work Program & Budget reports (19 PSCs, 159 reports with multiple additional documents, P&L summaries, reserves summaries etc)
- Prospects & Leads inventories (12 PSCs, 38 reports)
- PSC & basin level technical reports (18 reports)
- PODs & field reports (57 reports)
- Annual reserves reports (9 PSCs, 17 reports)
- Monthly production reports (4 PSCs, 146 reports)
- 2D seismic (SEG Y) in preparation
- 620 wells (logs, reports, LAS)
  
- *Catalog available*
- *Data available by basin, defined area, block or individual item level*
- *Collated public domain data also available*
  
- **DATABASE SERVICES** – Contract area and commitment/activity summaries, compiled seismic, wells, fields, reserves, production & infrastructure available to order